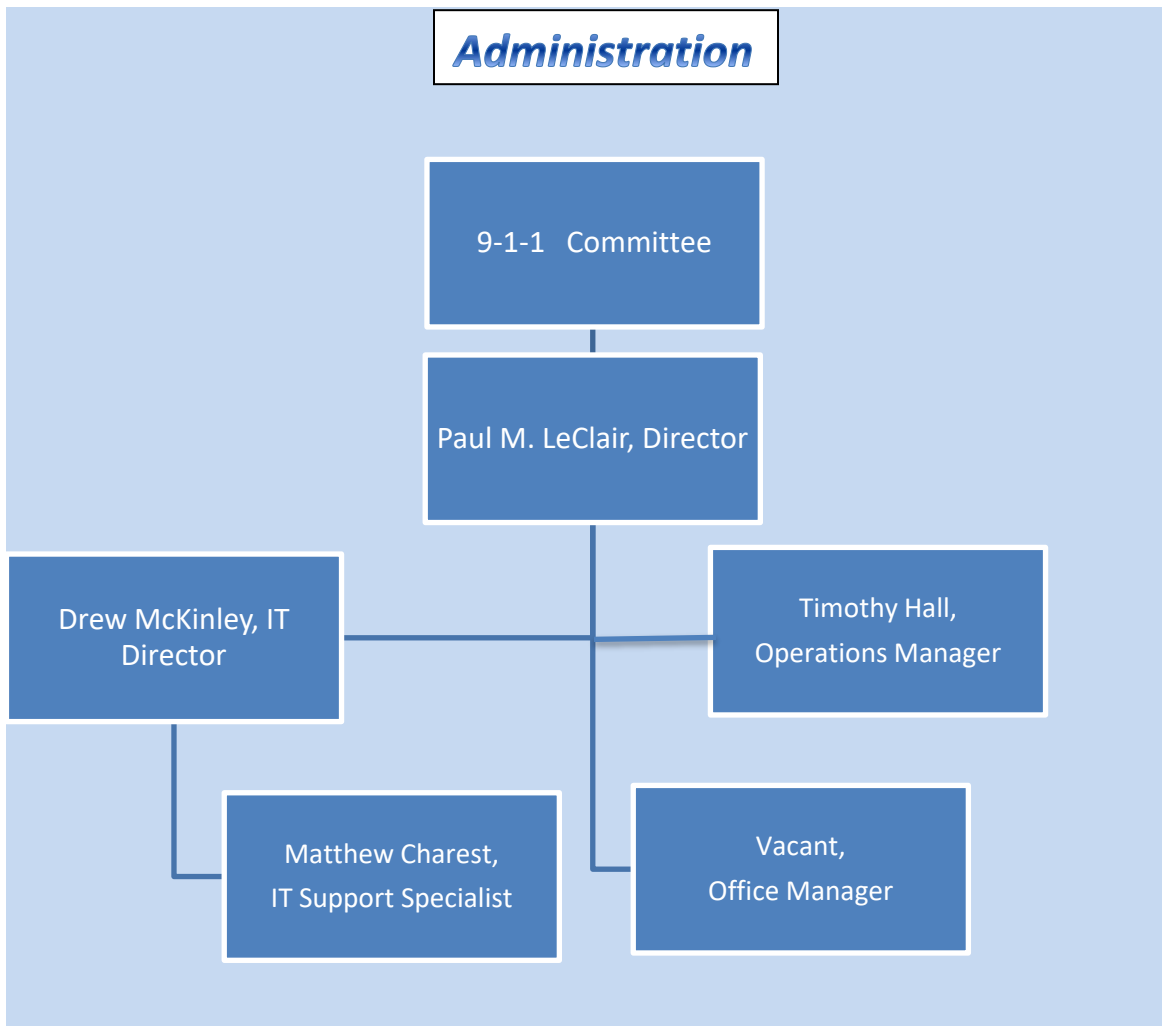
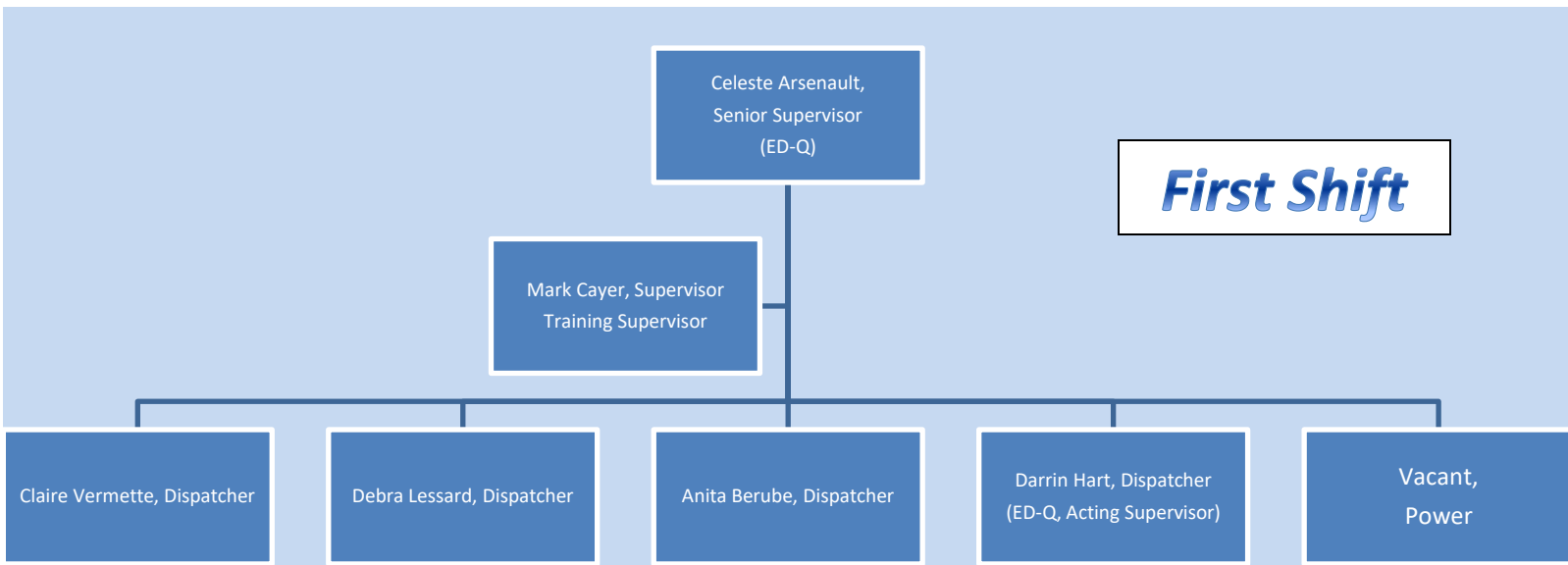


Lewiston-Auburn 9-1-1

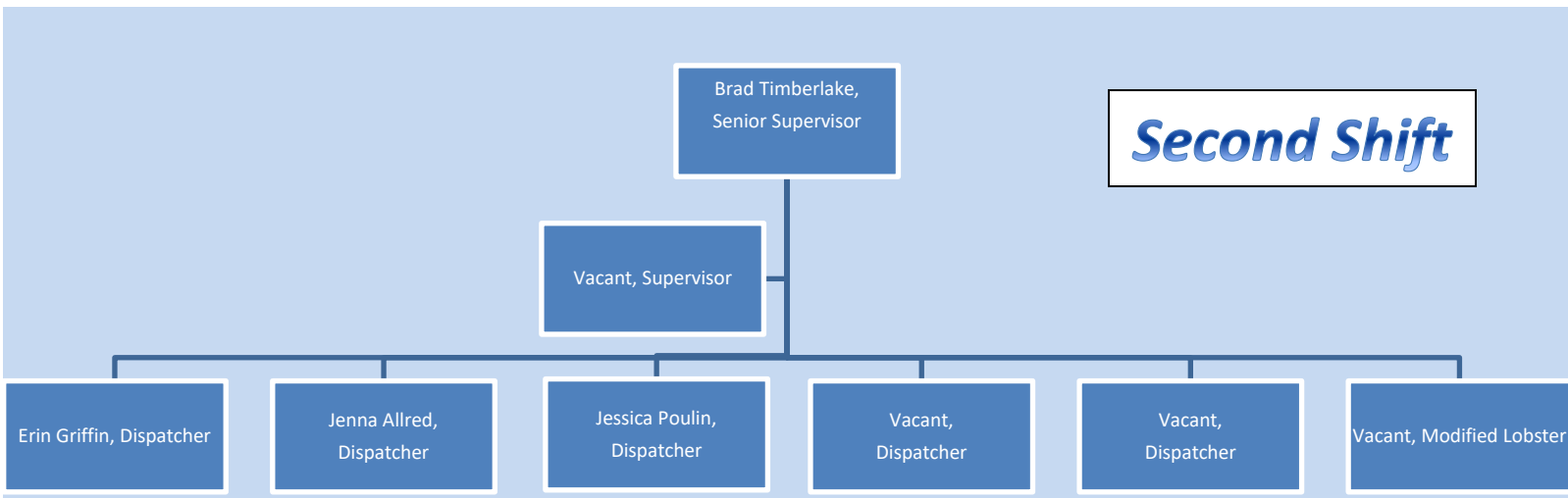
Organization

LA911 is comprised of an administration/support staff, and three primary shifts.

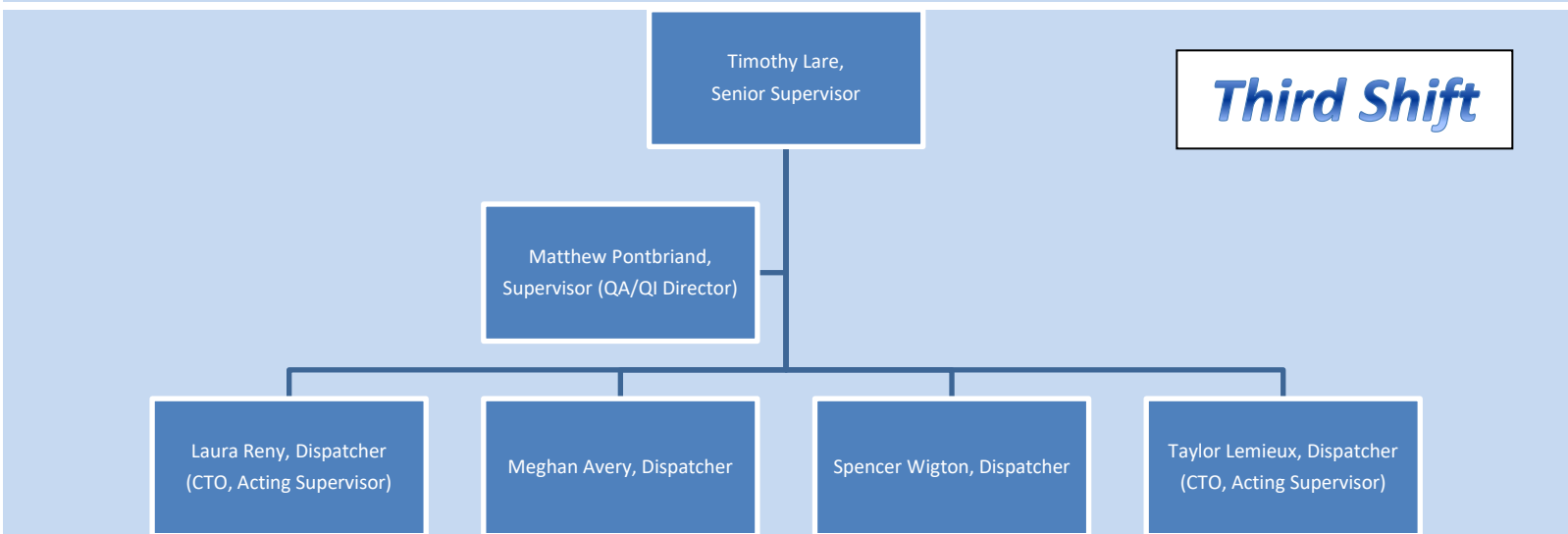




First Shift



Second Shift



Third Shift

Brad Timberlake,
Senior Supervisor

Part time

Jocelyn Kelly,
Part time Dispatcher

Jill LeBel,
Part time Dispatcher

Freda Keyser,
Part time Dispatcher (Acting
Supervisor)

Michelle Estabrook,
Part Time Dispatcher

Jessica Correia,
Part time Dispatcher
(Acting Supervisor)